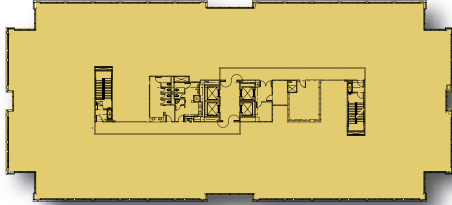


2600 NETWORK BOULEVARD



TYPICAL FLOOR PLAN

BUILDING SPECIFICS

B2

- Year Built..... 2006
- Floors..... Six
- Gross..... 150,000 SF
- Rentable..... 143,156 SF
- Typical Floorplate..... 24,866 SF
- Bay Depth Range..... 42' – 44'
- Ceiling Height..... 9'-10" with custom
9' stained wood suite doors
- Windows..... Floor-to-ceiling Viracon Solarscreen
insulating glass
- Lobby Finishes..... Two-story entrance with floor-to-ceiling
glass; oak wood walls, granite entry
floors, back lobby granite floor with carpet
insert, Zolatone walls
- Parking..... One level covered and executive parking
- Elevators..... Four elevators with 3,500 lb. capacity
- HVAC..... Water cooled chillers; air handler units,
one per floor; DDC controlled with zoned
VAV and FPB; electric strip heating



Double glass entry doors open into spacious two-story lobby. Featuring artwork by well-known Texas artists, lobby finishes include oak, granite, limestone, stainless steel, carpeting and floor-to-ceiling glass windows. Lobby extends past elevators to a glass enclosure with important artwork and a scenic vista of the spacious green lawn, fountains and lakes below. The building also has an underground executive parking garage as well as a spacious surface lot in front of the building. With easy access from the Dallas North Tollway, this property's freeway exposure allows visibility plus easy access for tenants and visitors. Hall Office Park amenities available to all tenants.



HALL OFFICE PARK
Redefining the workplace.

For information, contact
Kim Butler
Director of Leasing
972.377.1139
kbutler@hallfinancial.com
Tammy Lomonaco
Leasing Associate
972.377.1101
tlomonaco@hallfinancial.com

6801 Gaylord Parkway, Suite 100
Frisco, Texas 75034
www.hallofficepark.com

MASTER PLAN

