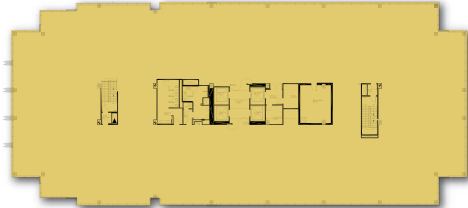


2601 NETWORK BOULEVARD



TYPICAL FLOOR PLAN

BUILDING SPECIFICS

C1

| | |
|-------------------------|-----------------------------------------------------------------------------------------------------------------------------------------------------------------|
| Year Built..... | 2001 |
| Floors..... | Six |
| Gross..... | 150,000 SF |
| Rentable..... | 142,761 SF |
| Typical Floorplate..... | 24,898 SF |
| Bay Depth Range..... | 42' – 46'6" |
| Ceiling Height..... | 9' - 10" with custom 9' stained wood suite doors |
| Windows..... | Floor-to-ceiling Viracon Solarscreen insulating glass |
| Lobby Finishes..... | Two-story entrance with floor-to-ceiling glass; Figured Sapele wood and slate walls, granite entry floors, back lobby granite floor with carpet insert |
| Parking..... | 4/1000; surface and covered executive parking |
| Elevators..... | Four elevators with 3,500 lb. capacity |
| HVAC..... | Air cooled screw chillers; Air handler units, one per floor; DDC controlled with zoned VAV and FPB; electric strip heating |

MASTER PLAN



Double glass entry doors open into spacious two-story lobby. Featuring artwork by well-known international artists, finishes include oak, granite, marble, stainless steel, carpeting and floor-to-ceiling glass windows. Lobby extends past elevators to an outdoor patio overlooking lakes, important international outdoor sculpture and landscaped walking paths. Building features detached garage with covered executive and surface parking. With easy access from the Dallas North Tollway, this property's freeway exposure allows visibility plus easy access for tenants and visitors. Hall Office Park amenities available to all tenants.



HALL OFFICE PARK

Redefining the workplace.

For information, contact
Kim Butler
 Director of Leasing
 972.377.1139
 kbutler@hallfinancial.com
Tammy Lomonaco
 Leasing Associate
 972.377.1101
 tlomonaco@hallfinancial.com

6801 Gaylord Parkway, Suite 100
 Frisco, Texas 75034
 www.hallofficepark.com