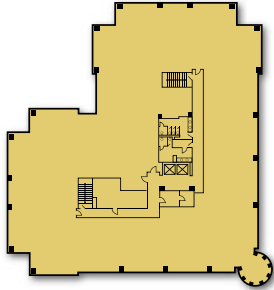


6801 GAYLORD PARKWAY



TYPICAL FLOOR PLAN



BUILDING SPECIFICS

B1

- Year Built..... 2000
- Floors..... Four
- Gross..... 100,000 SF
- Rentable..... 98,447 SF
- Typical Floorplate..... 26,669 SF
- Bay Depth..... 41' – 46'
- Ceiling Height..... 9'-10" with custom
9' stained wood suite doors
- Windows..... Floor-to-ceiling Viracon
Solarscreen insulating glass
- Lobby Finishes..... Two-story entrance with floor-to-ceiling
glass; Honduran Mahogany wood walls,
granite entry floors, Zolatone walls
- Parking..... 4/1000
- Elevators..... Two elevators with 3,500 lb. capacity
- HVAC..... Water cooled self contained air handler
units, one per floor; DDC controlled with
zoned VAV and FPB

Double glass entry doors open into spacious two-story lobby. Featuring the indoor portion of the prestigious Texas Sculpture Garden, ground floor finishes include oak, granite, marble, stainless steel, carpeting and floor-to-ceiling glass windows. Surrounding grounds just outside contain the outdoor section of the Texas Sculpture Garden as well as important international sculpture and water features. Underground executive parking garage provided as well as spacious lot at building entrance. With easy access from the Dallas North Tollway, this property's freeway exposure allows visibility plus easy access for tenants and visitors. Hall Office Park amenities available to all tenants.



HALL OFFICE PARK

Redefining the workplace.

For information, contact

Kim Butler
Director of Leasing
972.377.1139
kbutler@hallfinancial.com

Tammy Lomonaco
Leasing Associate
972.377.1101
tlomonaco@hallfinancial.com

6801 Gaylord Parkway, Suite 100
Frisco, Texas 75034
www.hallofficepark.com

MASTER PLAN

